

# Maine, Michigan, New Hampshire and Alaska's Women's Correctional Facilities

For testimony to House Corrections and Institutions Committee  
January 8<sup>th</sup>, 2020

# Maine

## Two Facilities Located in Windham, ME

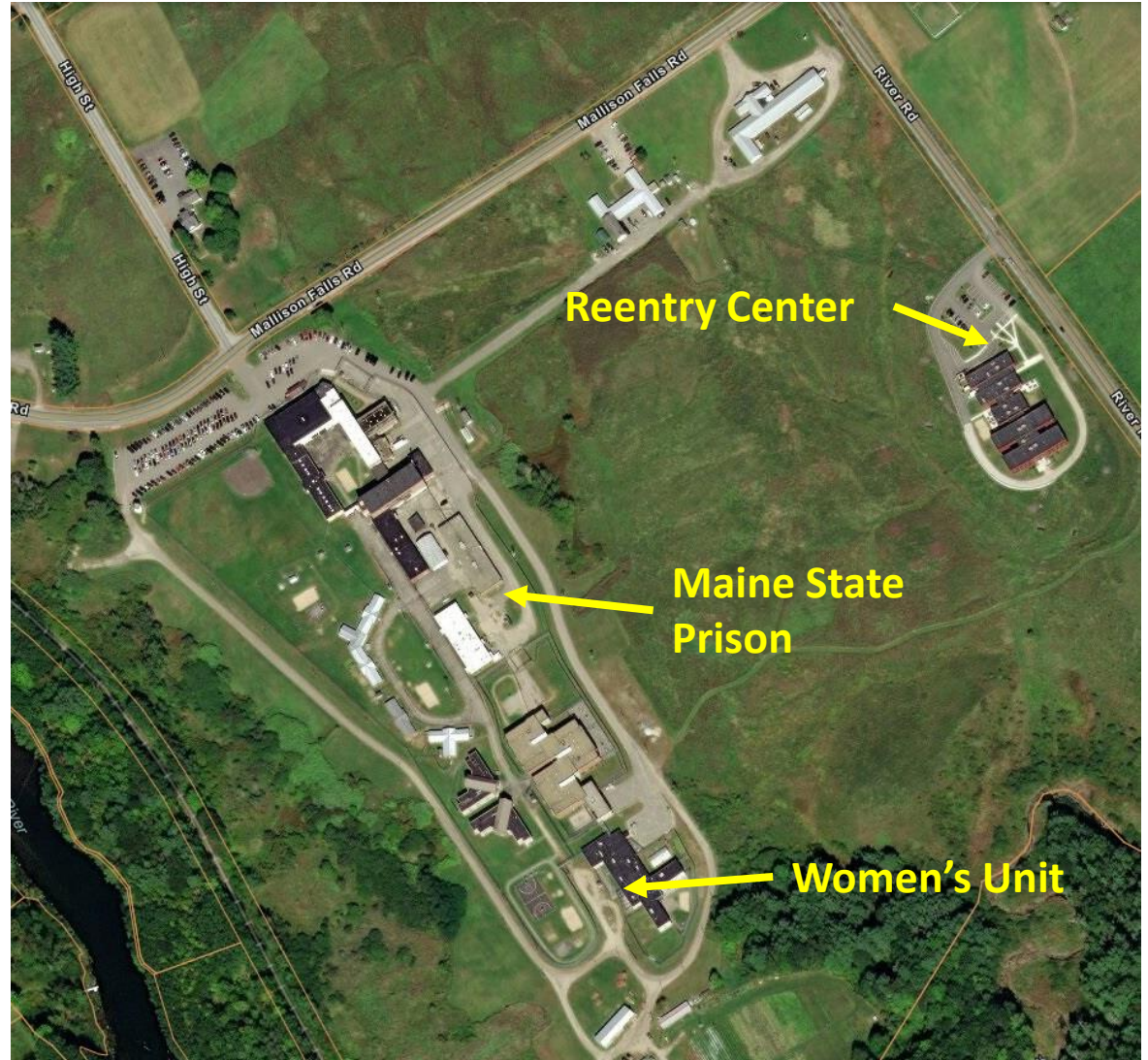
25 Minute drive west from downtown Portland. 108-acre site.

Greater Portland population is about half a million.

Only state facilities for women.

Women's prison opened in 2002, Re-Entry Facility opened 2017.

Maine has a county detainee system and a total population just over twice that of Vermont.



# Maine



## Reentry Facility

- 96 beds (was not at capacity at time of visit)
- Minimum-custody and community-release status females
- For final three years of sentences
- High levels of freedom contingent upon personal accountability
- Residents leave the non-secure building for work or volunteer opportunities and return for educational, behavioral and wellness programming

# Maine

## Project Goals:

- Locate the facility near the center of the population, community services, and employment opportunities.
- Provide plenty of spaces to allow programming and family reunification, and an environment to facilitate appropriate interactions and behavior.
- Provide a non-prison environment filled with natural light while permitting efficient staffing.
- Provide easy access to the natural environment with views and outdoor recreation, gardening, and program and education areas.
- Provide customized environments for assessment, treatment, learning and interaction for a range of risk levels and needs.

## Family Visiting Area

- Family enters through specific reception area
- Natural light
- No visible razor-wire fencing





# Maine

Women's facility within the boundary of the Maine State Prison. A more modern CRCF, similar to Springfield.

## Two Units within Men's Facility – total about 100

- 1 person cells for those recently arrived and whose level of security has not yet been determined or are in closed custody. About 20 inmates.
- General population. Open central area with two wings.



# Michigan

## Women's Huron Valley Correctional Facility (WHV)

Located in Ypsilanti, MI

180-acre site. 45

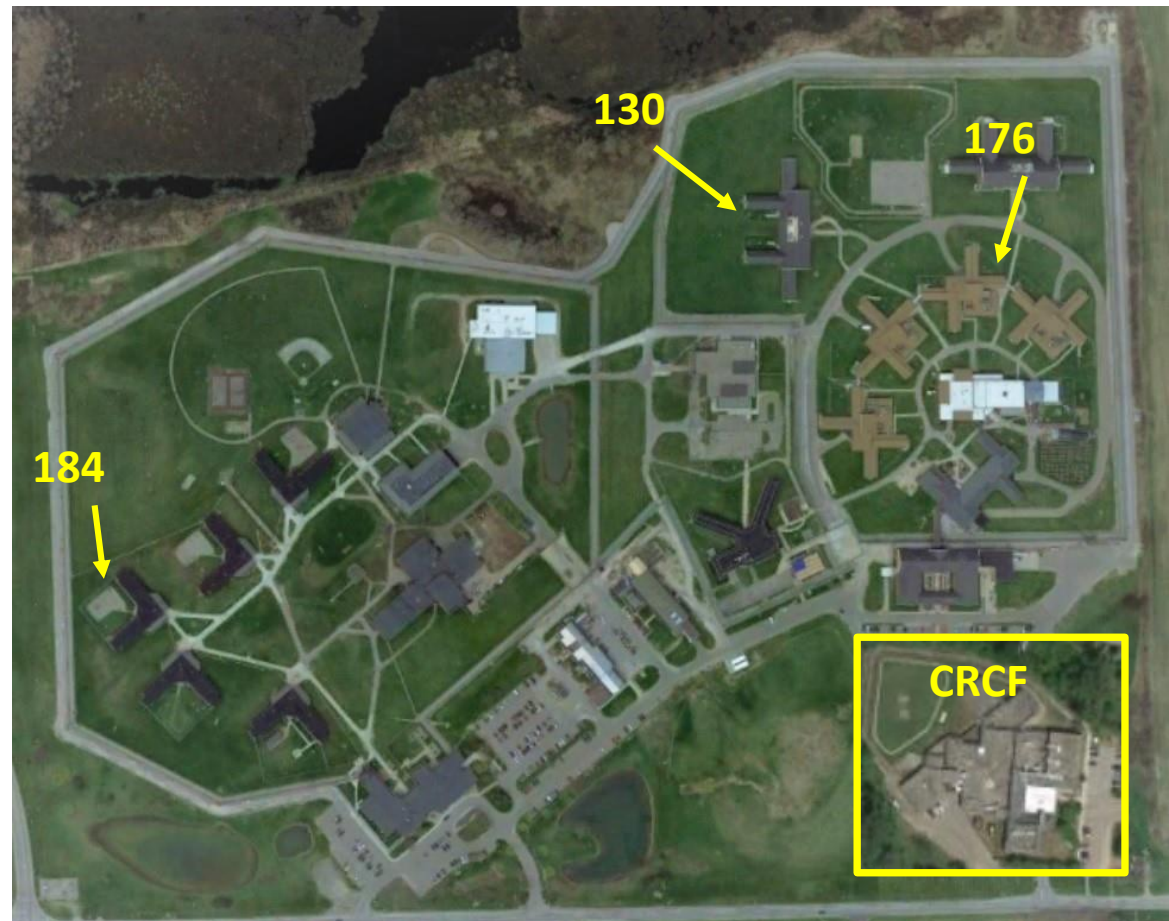
Minute drive west from  
downtown Detroit. 20  
minutes from Ann  
Arbor (pop. 121k)

Only state facilities for  
women.

Opened 2005.

### Security Levels

- I – Minimum Custody (1000)
- II – Medium Custody (753)
- IV – Close Custody (43)
  - Admin Seg (10)
- Special (mental health, infirmary, etc. - 218)
- Total: 2024



# Michigan

Result of a lawsuit with \$150 million settlement by the state. Policy changes requiring that women's living units be supervised by female corrections officers only.

Not a reentry facility. Inmates do not leave the campus.

Economies of scale allow for specialized mental and physical health personnel.





# New Hampshire

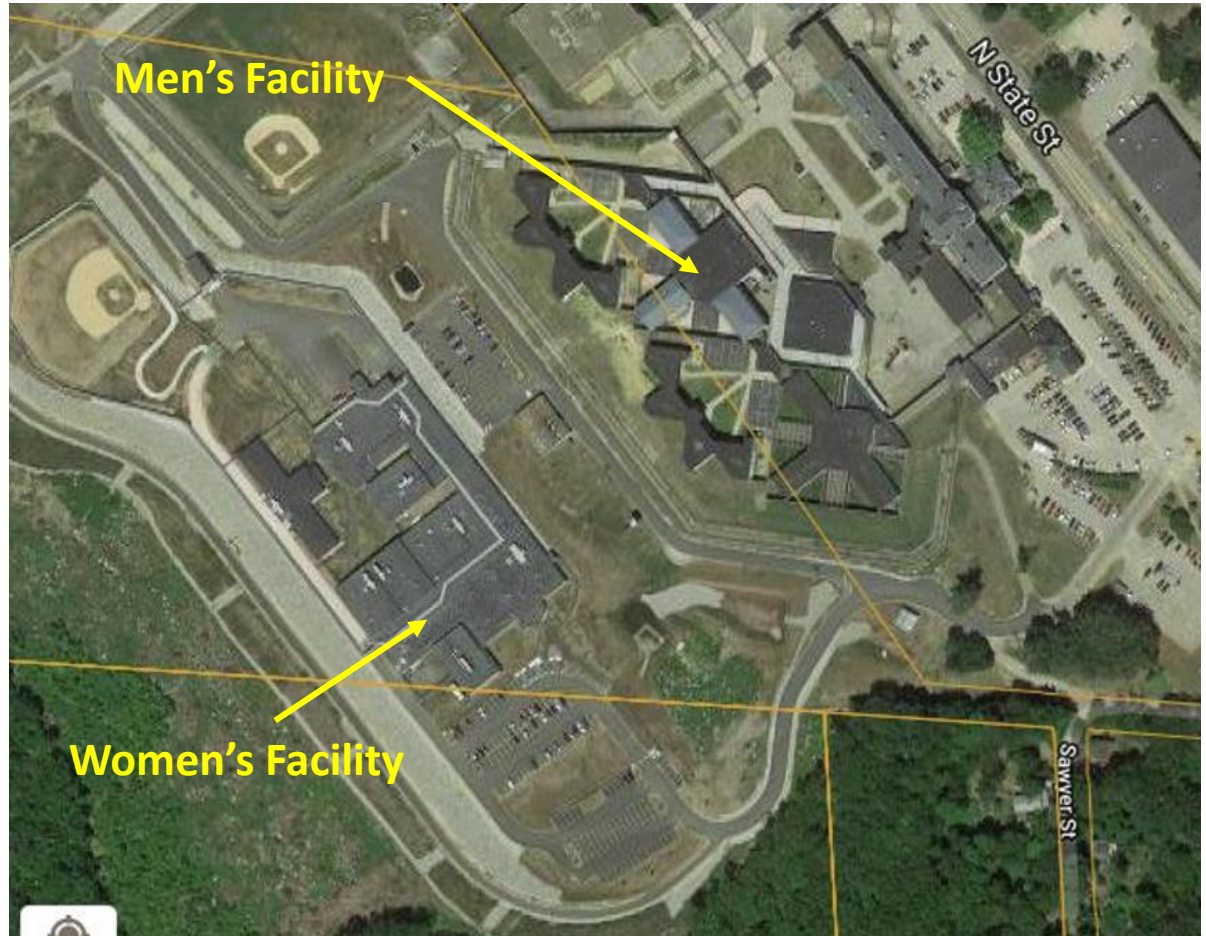
## New Hampshire Correctional Facility for Women

Located in Concord, NH next to, but outside the wire of, the Men's prison.

Only state facilities for women.

Opened 2018, the result of a lawsuit in that started in the late 1980's. Another class action suit in 2012.

224 Beds





# New Hampshire

No shared personnel between men and women's facility.



Legislature approved full body scanners in 2018.



# Alaska

## Hiland Mountain Correctional Center

Located in Eagle River AK. 15 miles outside of Anchorage (the major population center in AK)

Approximately 400 bed capacity for women only on 62 acres of land

Opened in 1974.





# Alaska

Strong emphasis on safety of inmates and pupil.

Community outreach programs: plant sales, crafts.

Cooperation with labor unions for skills training.

Policy of earned privileges: TVs, tablets etc.

Separate living units for faith-based program, substance abuse, etc.

